

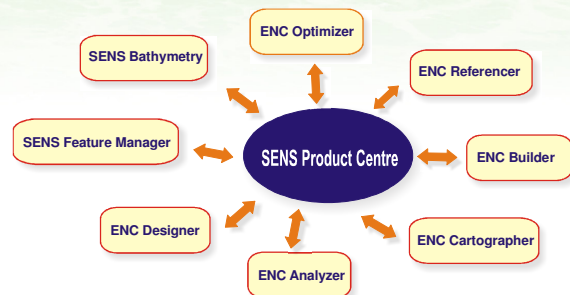
SENS Product Centre, ENC & INT1

Efficient generation and management of hydrographic products, whether it be electronic, paper charts or other products, calls for a solution that manages the total process and instead of just individual tasks and products. SENS Product Centre provides the ideal environment for this. With SENS Product Centre hydrographic organisations can easily create chart definitions and manage ENC schema's. Based on these definition SENS Product Centre controls the production of new editions or updates using the proven technology of SENS ENC and SENS INT1.

Product Management

SENS Product Centre stores all information required to repeatable produce a unique individual product. Integrated (SENS) components that produce the products communicate directly with SENS Product Centre which acts as the control centre for these components.

SENS Product Centre monitors the status of products by automatically tracking changes in the bathymetry and feature information required for the products.

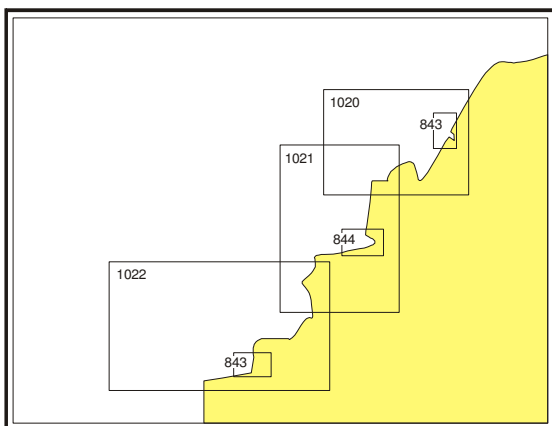


Catalogue function

Most hydrographic organisation maintain a whole series of standard products, often listed in a product catalogue. The catalogue is organised as a hierarchy. There will be types of products, each with their own definitions and instances of these product types again with their individual characteristics. SENS Product Centre support the management of these catalogues using the versatile catalogue function.

Product meta data

Apart from the specific catalogue information, more information is required when it comes to managing products. Technical information necessary to control the production tools is also available in SENS Product Centre. This category of information comprises spatial extends, production notes, update status, process meta data, data base filters, file locations, etc.



Typical chart catalogue display

Content management

SENS Product Centre supports the production of standardised products based on internationally accepted product specifications (e.g. int1 or S-57 ENC Product Specifications). Within the SENS concept the data used in these products is managed independently from the product itself. SENS Product Centre maintains the list of feature types that are used for each product type.

Workflow management

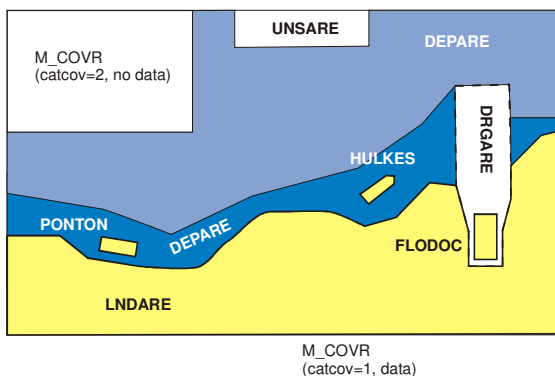
SENS Product Centre can be interfaced with third party Planning and Workflow Management tools using the available SENS API.



SENS ENC

SENS ENC supports hydrographic organisations with the production and maintenance of Electronic Navigational Charts based on the S-57 standard. The ENC Product Specification is translated into a set of powerful applications that combine the feature information managed by the SENS Feature Manager and the bathymetric information managed by SENS Bathymetry.

The two data sources are brought together in an automated process that requires almost no user interaction. SENS ENC automatically builds a topologically correct "skin of the earth" (layer 1) layer for each cell. Layer 1 is defined by the S-57 ENC Product



Layer 1, skin of the earth

The ENC build engine (ENC Builder) is triggered by SENS Product Centre. Whenever there is an update detected in either SENS Feature Manager or SENS Bathymetry the affected ENCs are marked.

Depending on the impact of the update, the update may be marked in various user defined categories (e.g. critical, regular, minor). Based on this the hydrographic organisation may start the production of an ENC update, an ENC re-issue or an ENC new edition.

More Information

For more information please visit www.atlis.nl or contact one of our sales representatives directly:

ATLIS

Kosterijland 78
3981 AJ, Bunnik, The Netherlands
tel: +31 30 602 00 70
fax: +31 30 602 00 80
email: info@atlis.nl

ATLIS is a proud member of the HydroTeam alliance

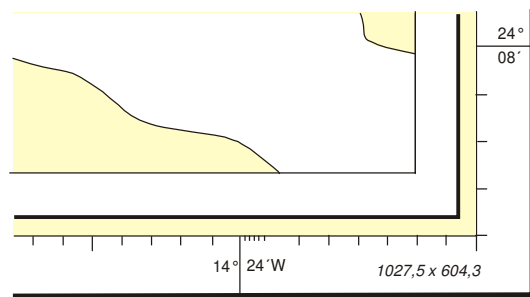
SENS INT1

Ever since the introduction of the Electronic Navigational Chart, hydrographic organisations have produced ENCs based on paper charts.

Navigation using electronic charts is rapidly becoming more popular. The ENC as a product is becoming more and more important compared to the traditional paper chart.

HydroTeam's member L-3 Nautronix noticed this and created a highly advanced tool capable of transforming an Electronic Navigational Chart semi automatic into a paper chart. This tool, the ENC Cartographer brings revolution to traditional chart production and has proved to be very successful.

SENS now integrates the ENC Cartographer in the SENS product line as SENS INT1. INT1 refers to the IHO Chart Specifications and is the standard describing the look and feel of the international chart, the so called INT chart. These charts are recognised by a magenta "INT" indication in the lower left corner. Nr 1 is also the number of the standardised list of symbols and abbreviations used on the INT chart.



INT 203 38

